

This guide provides all of the necessary information needed to remove and install a battery in any PAMS/PathTrax system.

Steps 1-5 demonstrate battery removal procedures.

Steps 6-9 demonstrate battery installation procedures.

Notice:

Failing to follow these installation instructions may void the factory warranty.

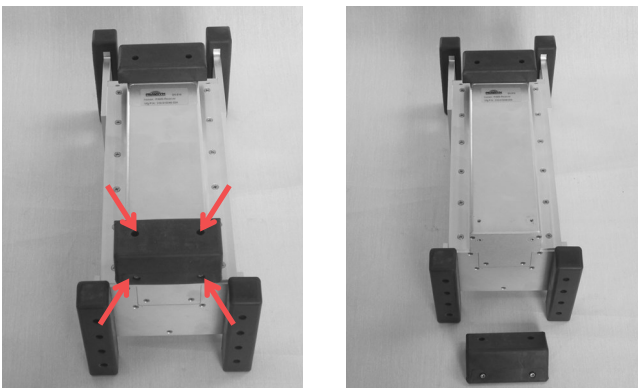
Praxsym
120 S. Third St.
Fisher , IL 61843

Phone: (217) 897-1744
Fax: (217) 897-6388
Sales@praxsym.com

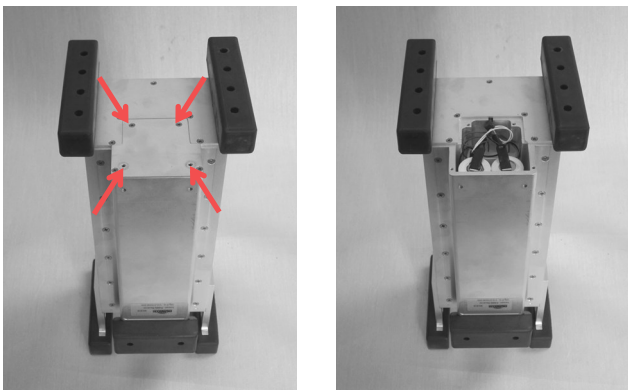
PAMS Battery Replacement Guide



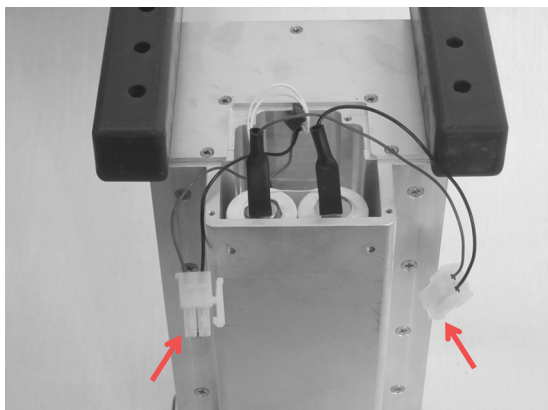
1) Place the unit on its face and remove the 4 socket head screws from the bottom rubber bumper and remove it from the unit.



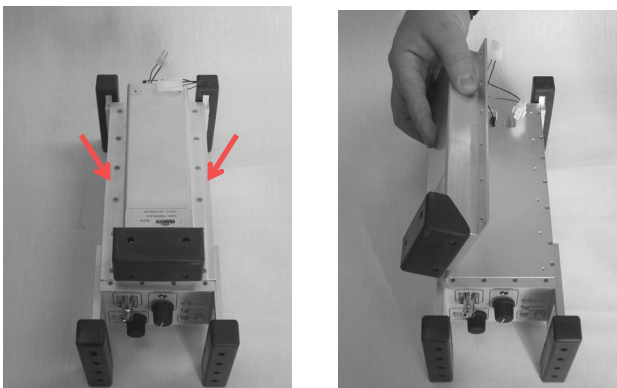
2) Place the unit on its top. Remove the 4 Phillips head screws from the bottom cover plate. Remove the plate.



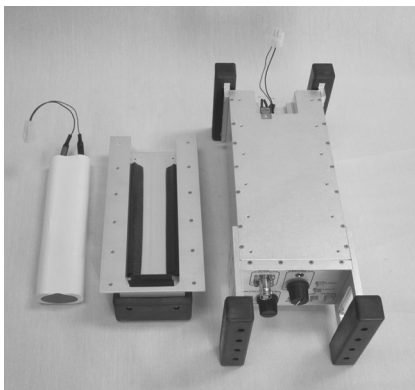
3) Gently pull the exposed wires out of the battery compartment and disconnect the battery connection by pressing the tab and gently pulling in opposite directions.



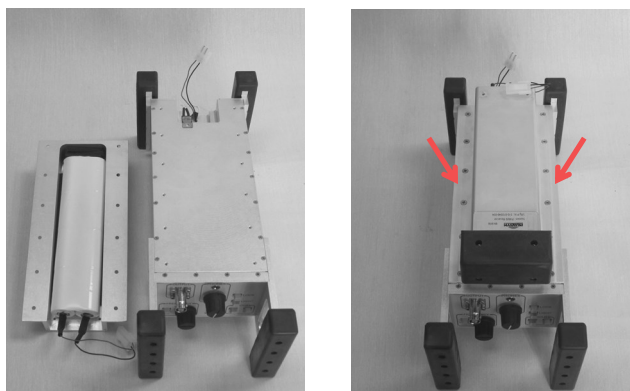
4) Place the unit on its face and remove the 12 Phillips head screws (6 on either side) and gently lift the battery compartment away from the unit.



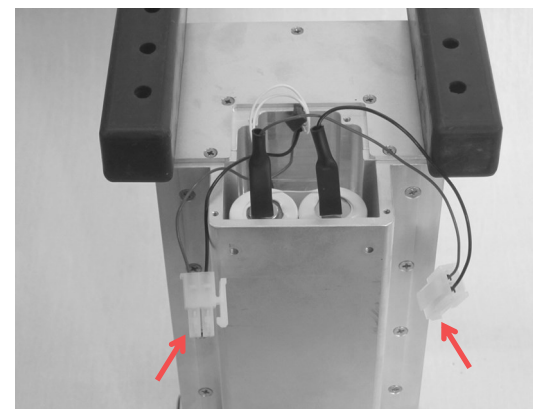
5) The battery can then be lifted out of the battery compartment.



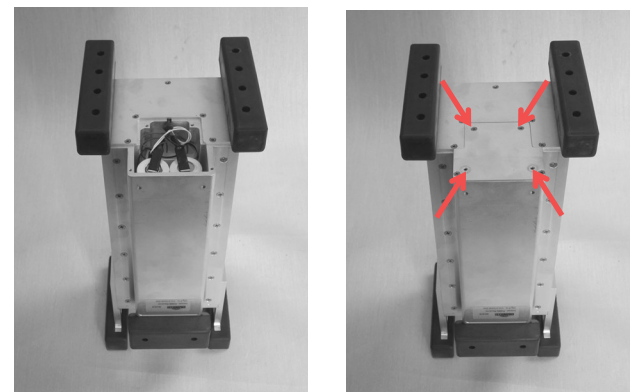
6) To install a new battery, securely push the battery into the battery compartment. Place the battery compartment on the unit and install the 12 Phillips head screws.



7) Place the unit on its top. Push the battery connection together until the tab clicks into place.



8) Gently tuck the exposed wires into the battery compartment and install the bottom cover plate with the 4 Phillips head screws. **Ensure no wires are pinched under the cover.**



9) Lay the unit on its face. Place the rubber bumper on the unit and install the 4 socket head screws. **Do not over tighten these screws as it will crush the bumper.**

